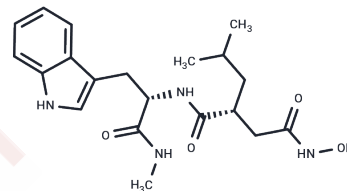


Ilomastat

Chemical Properties

| | |
|-------------------|---|
| CAS No. : | 142880-36-2 |
| Formula: | C ₂₀ H ₂₈ N ₄ O ₄ |
| Molecular Weight: | 388.46 |
| Appearance: | no data available |
| Storage: | Powder: -20°C for 3 years In solvent: -80°C for 1 year |



Biological Description

| | |
|---------------|--|
| Description | Ilomastat (GM6001) (GM6001, Galardin) is a broad spectrum matrix metalloprotease (MMP) inhibitor. |
| Targets(IC50) | MMP |
| In vivo | Topical application of GM6001 (400 µg/ml) prevents corneal ulceration after severe alkali injury. [3] In rabbit model after stenting, GM6001 significantly inhibits intimal hyperplasia and intimalcollagen content, and it increases lumen area in stented arteries without effects on proliferation rates. [4] |
| Kinase Assay | Collagenase assay uses the synthetic thiol ester substrate Ac-Pro-Leu-Gly-SCH(i-Bu)CO-Leu-Gly-OEt at pH 6.5. The collagenase concentration is 1-2 nM, and the substrate concentrations are from 0.1 to 0.7 nM. Km is found to vary between 1.5 and 4 mM. |

Solubility Information

| | |
|------------|---|
| Solubility | DMSO: 83.32 mg/mL (214.49 mM) (< 1 mg/ml refers to the product slightly soluble or insoluble) |
|------------|---|

Preparing Stock Solutions

| | 1mg | 5mg | 10mg |
|-------|-----------|------------|------------|
| 1 mM | 2.5743 mL | 12.8713 mL | 25.7427 mL |
| 5 mM | 0.5149 mL | 2.5743 mL | 5.1485 mL |
| 10 mM | 0.2574 mL | 1.2871 mL | 2.5743 mL |
| 50 mM | 0.0515 mL | 0.2574 mL | 0.5149 mL |

Please select the appropriate solvent to prepare the stock solution, according to the solubility of the product in different solvents. Please use it as soon as possible.

Reference

- Grobelny D, et al. *Biochemistry*, 1992, 31(31), 7152-714.
- Sun Y, Lyu B, Yang C, et al. An enzyme-responsive and transformable PD-L1 blocking peptide-photosensitizer conjugate enables efficient photothermal immunotherapy for breast cancer. *Bioactive Materials*. 2023, 22: 47-59.
- Yin L, Sun H, Zhang H, et al. Quantitatively Visualizing Tumor-related Protease Activity In Vivo Using A Ratiometric Photoacoustic Probe. *Journal of the American Chemical Society*. 2019 Feb 20;141(7):3265-3273.
- Leppert D, et al. *J Immunol*, 1995, 154(9), 4379-4389.
- Yin L, Sun H, Zhao M, et al. Rational Design and Synthesis of a Metalloproteinase-Activatable Probe for Dual-Modality Imaging of Metastatic Lymph Nodes in Vivo. *The Journal of Organic Chemistry*. 2019 May 17;84(10):6126-6133
- Schultz GS, et al. *Invest Ophthalmol Vis Sci*, 1992, 33(12) 3325-3331.
- Li C, et al. *J Am Coll Cardiol*, 2002, 39(11), 1852-1858.
- Xia J, Sun S, Wu X, et al. Enzyme-activated anchoring of peptide probes on plasma membrane for selectively lighting up target cells. *Analyst*. 2020
- Luan F, Yu Z, Yin L, et al. Accurate detection of matrix metalloproteinase-2 activity in clinical gastric cancer tissues using a fluorescent probe. *Analytical Methods*. 2019, 11(11): 1516-1521
- Luan F, Yu Z, Yin L, et al. Accurate detection of matrix metalloproteinase-2 activity in clinical gastric cancer tissues using a fluorescent probe[J]. *Analytical Methods*. 2019, 11(11): 1516-1521.
- Xia J, Sun S, Wu X, et al. Enzyme-activated anchoring of peptide probes onto plasma membranes for selectively lighting up target cells[J]. *Analyst*. 2020
- Cheng Z, Jin Y, Li J, et al. Fibronectin-targeting and metalloproteinase-activatable smart imaging probe for fluorescence imaging and image-guided surgery of breast cancer. *Journal of Nanobiotechnology*. 2023, 21(1): 1-16.
- Hydrophobicity causes anomalous migration of cystine/glutamate antiporter SLC7A11 in SDS-PAGE with low acrylamide concentration
- Xia J, Sun S, Wu X, et al. Enzyme-activated anchorage of peptide probes on plasma membrane for selectively lighting up target cells. *Analyst*. 2020
- Yin L, Sun H, Zhao M, et al. Rational Design and Synthesis of a Metalloproteinase-Activatable Probe for Dual-Modality Imaging of Metastatic Lymph Nodes in Vivo[J]. *The Journal of organic chemistry*. 2019 May 17;84(10): 6126-6133.
- Yin L, Sun H, Zhang H, et al. Quantitatively Visualizing Tumor-related Protease Activity In Vivo Using A Ratiometric Photoacoustic Probe[J]. *Journal of the American Chemical Society*. 2019 Feb 20;141(7):3265-3273.

Inhibitor · Natural Compounds · Compound Libraries · Recombinant Proteins

This product is for Research Use Only. Not for Human or Veterinary or Therapeutic Use

Tel: 781-999-4286 E_mail: info@targetmol.com Address: 36 Washington Street, Wellesley Hills, MA 02481