

## D-Melibiose

## Chemical Properties

CAS No. : 585-99-9

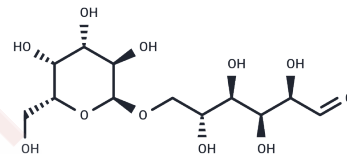
Formula: C<sub>12</sub>H<sub>22</sub>O<sub>11</sub>

Molecular Weight: 342.3

Appearance: no data available

Storage: keep away from direct sunlight

Powder: -20°C for 3 years | In solvent: -80°C for 1 year



## Biological Description

Description	D-Melibiose (Galalpha1-6Glcbeta) is a reducing disaccharide formed by an alpha-1, 6 linkage between galactose and glucose (D-Gal-α(1→6)-D-Glc).
Targets(IC50)	Endogenous Metabolite

## Solubility Information

Solubility	DMSO: 60 mg/mL (175.28 mM),Sonication is recommended. (< 1 mg/ml refers to the product slightly soluble or insoluble)
------------	--

## Preparing Stock Solutions

	1mg	5mg	10mg
1 mM	2.9214 mL	14.6071 mL	29.2141 mL
5 mM	0.5843 mL	2.9214 mL	5.8428 mL
10 mM	0.2921 mL	1.4607 mL	2.9214 mL
50 mM	0.0584 mL	0.2921 mL	0.5843 mL

Please select the appropriate solvent to prepare the stock solution, according to the solubility of the product in different solvents. Please use it as soon as possible.

## Reference

Hariharan P, Guan L. J Biol Chem. 2014 Nov 21;289(47):33012-9.

Gao Z, Li L, Chen W, et al. Distinguishment of Glycan Isomers by Trapped Ion Mobility Spectrometry. Analytical Chemistry. 2021, 93(26): 9209-9217.

Gao Z, He Y, He Q, et al. Multidimensional identification of disaccharide isomers based on non-covalent complexes and tandem mass spectrometry. Talanta. 2022: 123674

**Inhibitor · Natural Compounds · Compound Libraries · Recombinant Proteins**

This product is for Research Use Only· Not for Human or Veterinary or Therapeutic Use

Tel:781-999-4286    E\_mail:info@targetmol.com    Address:36 Washington Street,Wellesley Hills,MA 02481