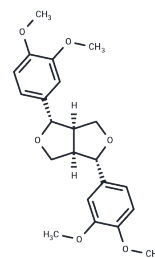


Pinoresinol dimethyl ether

Chemical Properties

CAS No. :	29106-36-3
Formula:	C ₂₂ H ₂₆ O ₆
Molecular Weight:	386.44
Appearance:	no data available
Storage:	store at low temperature, keep away from direct sunlight
	Powder: -20°C for 3 years In solvent: -80°C for 1 year



Biological Description

Description	Pinoresinol dimethyl ether is a nonphenolic furan lignan isolated from the stem bark of <i>Magnolia kobus</i> with neurological activity. It stimulates upstream MAPK, PKC and PKA pathways and induces neural protrusion growth in PC12 cells.
Targets(IC50)	PKC

Solubility Information

Solubility	DMSO: 55 mg/mL (142.32 mM), Sonication is recommended. (< 1 mg/ml refers to the product slightly soluble or insoluble)
------------	--

Preparing Stock Solutions

	1mg	5mg	10mg
1 mM	2.5877 mL	12.9386 mL	25.8772 mL
5 mM	0.5175 mL	2.5877 mL	5.1754 mL
10 mM	0.2588 mL	1.2939 mL	2.5877 mL
50 mM	0.0518 mL	0.2588 mL	0.5175 mL

Please select the appropriate solvent to prepare the stock solution, according to the solubility of the product in different solvents. Please use it as soon as possible.

Reference

D, Chávez, Acevedo L A , Mata R , . Tryptamine derived amides and acetogenins from the seeds of *Rollinia mucosa*. [J]. Journal of Natural Products, 1999, 62(8):1119-1122.

Inhibitor · Natural Compounds · Compound Libraries · Recombinant Proteins

This product is for Research Use Only. Not for Human or Veterinary or Therapeutic Use

Tel: 781-999-4286 E_mail: info@targetmol.com Address: 36 Washington Street, Wellesley Hills, MA 02481