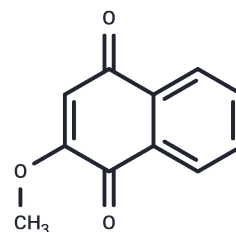


## Lawsone methyl ether

## Chemical Properties

CAS No. :	2348-82-5
Formula:	C <sub>11</sub> H <sub>8</sub> O <sub>3</sub>
Molecular Weight:	188.18
Appearance:	no data available
Storage:	Powder: -20°C for 3 years   In solvent: -80°C for 1 year



## Biological Description

Description	Lawsone methyl ether (2-Methoxy-1,4-naphthoquinone) induces apoptosis in A549 cells independently of cell cycle arrest, mediated by JNK and p38 MAPK signaling pathways. These pathways are activated due to oxidative DNA damage from increased ROS generation in MNQ-treated A549 cells.
Targets(IC50)	Apoptosis,Antibacterial,Antifungal

## Solubility Information

Solubility	DMSO: 10 mg/mL (53.14 mM),Sonication is recommended. (< 1 mg/ml refers to the product slightly soluble or insoluble)
------------	---

## Preparing Stock Solutions

	1mg	5mg	10mg
1 mM	5.3141 mL	26.5703 mL	53.1406 mL
5 mM	1.0628 mL	5.3141 mL	10.6281 mL
10 mM	0.5314 mL	2.657 mL	5.3141 mL
50 mM	0.1063 mL	0.5314 mL	1.0628 mL

Please select the appropriate solvent to prepare the stock solution, according to the solubility of the product in different solvents. Please use it as soon as possible.

### Reference

Ong J Y H , Yong P V C , Lim Y M , et al. 2-Methoxy-1,4-naphthoquinone (MNQ) induces apoptosis of A549 lung adenocarcinoma cells via oxidation-triggered JNK and p38 MAPK signaling pathways[J]. Life Sciences, 2015, 135: 158-164.

Parat V, Onteniente B, Maruotti J. A high-throughput screening platform for pigment regulating agents using pluripotent stem cell derived melanocytes. Experimental Dermatology. 2020

Zhang H, Cai J, Li C, et al. Wogonin inhibits latent HIV-1 reactivation by downregulating histone crotonylation. Phytomedicine. 2023: 154855.

Parat V, Onteniente B, Maruotti J. A high-throughput screening platform for pigment regulating agents using pluripotent stem cell-derived melanocytes[J]. Experimental Dermatology. 2020

Parat V, Onteniente B, Maruotti J. A high-throughput screening platform for pigment regulating agents using pluripotent stem cell derived melanocytes[J]. Experimental Dermatology. 2020.

**Inhibitor · Natural Compounds · Compound Libraries · Recombinant Proteins**

This product is for Research Use Only. Not for Human or Veterinary or Therapeutic Use

Tel: 781-999-4286    E\_mail: info@targetmol.com    Address: 36 Washington Street, Wellesley Hills, MA 02481