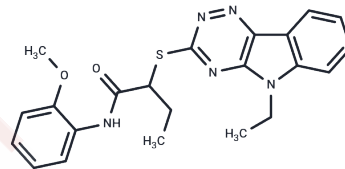


SW044248

Chemical Properties

CAS No. : 522650-83-5
 Formula: C₂₂H₂₃N₅O₂S
 Molecular Weight: 421.52
 Appearance: no data available
 Storage: Powder: -20°C for 3 years | In solvent: -80°C for 1 year



Biological Description

Description	SW044248 is a noncanonical Top1 inhibitor. It has selective toxicity for NSCLC cells.
Targets(IC50)	Topoisomerase
Kinase Assay	The potency of JNJ-42041935 for inhibition of the structurally related enzyme FIH is assessed by methods similar to those described for PHD2. In brief, activity of FIH is determined using purified glutathione transferase-tagged full-length FIH amino acids 1 to 350 and a synthetic HIF-1 α peptide corresponding to residues Asp788 to Leu822. Compounds are preincubated with 17.1 nM FIH for 30 min, followed by a 10-min incubation with 1 μ M [2- ¹⁴ C]2-oxoglutarate, in the presence of 10 μ M FeNH ₄ SO ₄ in reaction buffer. The selectivity of JNJ-42041935 for inhibition of a range of other targets available for testing in commercial assays is also assessed at concentrations of 1 and 10 μ M[1].

Solubility Information

Solubility	DMSO: 7.14 mg/mL (16.94 mM), Sonication is recommended. (< 1 mg/ml refers to the product slightly soluble or insoluble)
------------	--

Preparing Stock Solutions

	1mg	5mg	10mg
1 mM	2.3724 mL	11.8618 mL	23.7237 mL
5 mM	0.4745 mL	2.3724 mL	4.7447 mL
10 mM	0.2372 mL	1.1862 mL	2.3724 mL
50 mM	0.0474 mL	0.2372 mL	0.4745 mL

Please select the appropriate solvent to prepare the stock solution, according to the solubility of the product in different solvents. Please use it as soon as possible.

Reference

Zubovych IO, et al. Mol Y Ther. 2016 Jan;15(1):23-36.

Inhibitor · Natural Compounds · Compound Libraries · Recombinant Proteins

This product is for Research Use Only· Not for Human or Veterinary or Therapeutic Use

Tel:781-999-4286 E_mail:info@targetmol.com Address:36 Washington Street,Wellesley Hills,MA 02481