

BMS-1

Chemical Properties

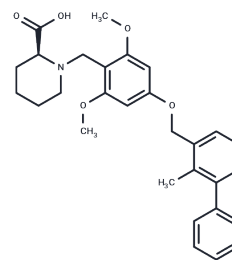
CAS No. : 1675201-83-8

Formula: C₂₉H₃₃NO₅

Molecular Weight: 475.58

Appearance: no data available

Storage: Powder: -20°C for 3 years | In solvent: -80°C for 1 year



Biological Description

Description	BMS-1 (PD-1/PD-L1 inhibitor 1) is an inhibitor of the PD1-PD-L1 protein-protein interaction. It also acts as an immunomodulator. Programmed death ligand 1 (PD-L1) is a protein in humans that is encoded by the CD274 gene and the upregulation of PD-L1 allows Ys to evade the host immune system. High tumor expression of PD-L1 was associated with increased tumor aggressiveness and a 4.5-fold increased risk of death.
Targets(IC50)	Apoptosis,PD-1/PD-L1

Solubility Information

Solubility	DMSO: 4.76 mg/mL (10 mM),Sonication is recommended. (< 1 mg/ml refers to the product slightly soluble or insoluble)
------------	--

Preparing Stock Solutions

	1mg	5mg	10mg
1 mM	2.1027 mL	10.5135 mL	21.027 mL
5 mM	0.4205 mL	2.1027 mL	4.2054 mL
10 mM	0.2103 mL	1.0513 mL	2.1027 mL
50 mM	0.0421 mL	0.2103 mL	0.4205 mL

Please select the appropriate solvent to prepare the stock solution, according to the solubility of the product in different solvents. Please use it as soon as possible.

Reference

Chupak Louis S, et al. From PCT Int. Appl. (2015), WO 2015034820 A1 20150312.

Zhao Y, Hao C, Li M, et al. PD-1/PD-L1 inhibitor ameliorates silica-induced pulmonary fibrosis by maintaining systemic immune homeostasis. Biomedicine & Pharmacotherapy. 2022, 148: 112768.

Choi J G, Kim Y S, Kim J H, et al. Anticancer effect of Salvia plebeia and its active compound by improving T-cell activity via blockade of PD-1/PD-L1 interaction in humanized PD-1 mouse model[J]. Frontiers in immunology,. 2020, 11.

Choi J G, Kim Y S, Kim J H, et al. Anticancer effect of Salvia plebeia and its active compound by improving T-cell activity via blockade of PD-1/PD-L1 interaction in humanized PD-1 mouse model. Frontiers in immunology. 2020 Nov 5;11:598556. doi: 10.3389

Inhibitor · Natural Compounds · Compound Libraries · Recombinant Proteins

This product is for Research Use Only. Not for Human or Veterinary or Therapeutic Use

Tel: 781-999-4286 E_mail: info@targetmol.com Address: 36 Washington Street, Wellesley Hills, MA 02481