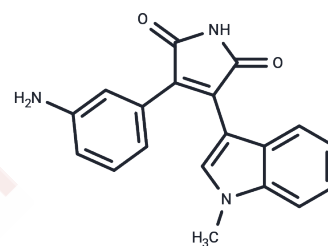


## CP21R7

## Chemical Properties

CAS No. :	125314-13-8
Formula:	C <sub>19</sub> H <sub>15</sub> N <sub>3</sub> O <sub>2</sub>
Molecular Weight:	317.34
Appearance:	no data available
Storage:	Powder: -20°C for 3 years   In solvent: -80°C for 1 year



## Biological Description

Description	CP21R7 (CP21) is an effective and specific GSK3 $\beta$ inhibitor. It is used as an activator of stem cells prior to the induction of differentiation of stem cells to smooth muscle and endothelial cells. CP21R7 can be combined with BMP4 to commit human pluripotent stem cells to a mesodermal fate.
Targets(IC50)	GSK-3,PKC

## Solubility Information

Solubility	Ethanol: 1 mg/mL (3.15 mM),Sonication is recommended. DMSO: 59 mg/mL (185.92 mM),Sonication is recommended. H <sub>2</sub> O: < 1 mg/mL (insoluble or slightly soluble), (< 1 mg/ml refers to the product slightly soluble or insoluble)
------------	---

## Preparing Stock Solutions

	1mg	5mg	10mg
1 mM	3.1512 mL	15.756 mL	31.5119 mL
5 mM	0.6302 mL	3.1512 mL	6.3024 mL
10 mM	0.3151 mL	1.5756 mL	3.1512 mL
50 mM	0.063 mL	0.3151 mL	0.6302 mL

Please select the appropriate solvent to prepare the stock solution, according to the solubility of the product in different solvents. Please use it as soon as possible.

## Reference

- Gong L, et al. Bioorg Med Chem Lett. 2010 Mar 1;20(5):1693-6.  
 Sahara M, et al. Cell Res. 2015 Jan;25(1):148.  
 Patsch C, et al. Nat Cell Biol. 2015 Aug;17(8):1994-12003.  
 Sahara M, et al. Cell Res. 2014 Jul;24(7):820-41.

**Inhibitor · Natural Compounds · Compound Libraries · Recombinant Proteins**

This product is for Research Use Only· Not for Human or Veterinary or Therapeutic Use

Tel:781-999-4286    E\_mail:info@targetmol.com    Address:36 Washington Street,Wellesley Hills,MA 02481