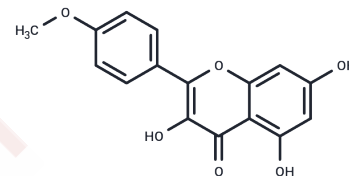


kaempferide

Chemical Properties

CAS No. :	491-54-3
Formula:	C ₁₆ H ₁₂ O ₆
Molecular Weight:	300.26
Appearance:	no data available
Storage:	Powder: -20°C for 3 years In solvent: -80°C for 1 year



Biological Description

Description	kaempferide (4'-Methylkaempferol) inhibits the proliferation of native and estrogen receptor beta overexpressing colon cancer cells through a mechanism not mediated by ligand binding dependent estrogen receptor activation.
Targets(IC50)	Estrogen Receptor/ERR,Estrogen/progestogen Receptor,Antibacterial,Autophagy, Influenza Virus

Solubility Information

Solubility	DMSO: 60 mg/mL (199.83 mM),Sonication is recommended. Chloroform, Dichloromethane, Ethyl Acetate, Acetone: Soluble, (< 1 mg/ml refers to the product slightly soluble or insoluble)
------------	---

Preparing Stock Solutions

	1mg	5mg	10mg
1 mM	3.3304 mL	16.6522 mL	33.3045 mL
5 mM	0.6661 mL	3.3304 mL	6.6609 mL
10 mM	0.333 mL	1.6652 mL	3.3304 mL
50 mM	0.0666 mL	0.333 mL	0.6661 mL

Please select the appropriate solvent to prepare the stock solution, according to the solubility of the product in different solvents. Please use it as soon as possible.

Reference

- Song P,et al. [Comparison of effects of kaempferide and anhydroicaritin on biomineralization of cultured osteoblasts]. Yao Xue Xue Bao. 2012 Jul;47(7):890-6.
- Jang S A, Hwang Y H, Kim T, et al. Anti-Osteoporotic and Anti-Adipogenic Effects of the Water Extract of *Drynaria roosii* Nakaike in Ovariectomized Mice Fed a High-Fat Diet. *Molecules*. 2019, 24(17): 3051
- Martineti V,et al. Inhibition of in vitro growth and arrest in the G0/G1 phase of HCT8 line human colon cancer cells by kaempferide triglycoside from *Dianthus caryophyllus*. *Phytother Res*. 2010 Sep;24(9):1302-8.
- Jang S A, Hwang Y H, Kim T, et al. Anti-Osteoporotic and Anti-Adipogenic Effects of the Water Extract of *Drynaria roosii* Nakaike in Ovariectomized Mice Fed a High-Fat Diet[J]. *Molecules*. 2019, 24(17): 3051.

Inhibitor · Natural Compounds · Compound Libraries · Recombinant Proteins

This product is for Research Use Only· Not for Human or Veterinary or Therapeutic Use

Tel:781-999-4286 E_mail:info@targetmol.com Address:36 Washington Street,Wellesley Hills,MA 02481