

TPEN

Chemical Properties

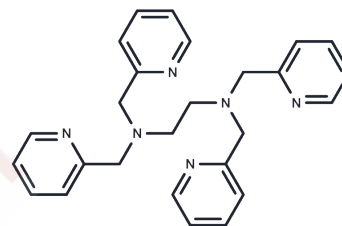
CAS No. : 16858-02-9

Formula: C₂₆H₂₈N₆

Molecular Weight: 424.54

Appearance: no data available

Storage: Powder: -20°C for 3 years | In solvent: -80°C for 1 year



Biological Description

Description	TPEN (TPEDA) is a specific cell-permeable heavy metal chelator.
Targets(IC50)	Apoptosis,Reactive Oxygen Species,Autophagy
In vitro	TPEN attenuates Fura-2 fluorescence changes induced by cadmium, mercury, and methylmercury. In cells stimulated with cadmium chloride (10/30 μ M), the addition of TPEN at 3 h after exposure significantly decreases the elevated Fura-2 fluorescence ratio to the basal levels within 10 min (119.6 \pm 2.4% or 109 \pm 1.5% decrease in Δ Ratio (F340/F380)). TPEN targets colon cancer cells through redox cycling of copper. TPEN dose- and time-dependently reduces cell viability. TPEN-induced cell death is also dependent on the redox cycling of copper since the copper chelator neocuproine inhibited DNA damage and reduced pChk1, γ -H2AX, and ATM protein expression.
Kinase Assay	In a 96-well-plate, 40 nM USP2, 40 nM USP7, or 20 nM SENP2 is preincubated with a concentration range of NSC 632839 (NCI/NIH developmental therapeutics program) or control for 30 min before supplementation with an equal volume of 60 nM Ub-PLA2/40 μ M NBD C6-HPC (USP2 or 7) or 20 nM SUMO3-PLA2/40 μ M NBD C6-HPC (SENP2). Relative activity of the enzymes is determined by measuring the RFU values at single time points within the initial linear range (USP, 50 min; USP7, 50 min; and SENP2, 30 min). The RFU values within the initial linear range are normalized such that isopeptidase+vehicle=0% inhibition and isopeptidase+NEM=100% inhibition. The EC50 values are determined as above. The inhibitory activity of the test compound against the reporter enzyme PLA2 is performed as described above except there is no preincubation step and the data are normalized such that free PLA2+vehicle=0% inhibition and free PLA2+EDTA=100% inhibition. PLA2 activity is determined 8 min after the addition of the reagents[1].
Cell Research	TPEN is dissolved in DMSO and then diluted with appropriate medium[1]. Human neuroblastoma cell line SH-SY5Y, are grown in Dulbecco's Modified Eagle's Medium (DMEM) mixed 1:1 with Ham's F-12 nutrient mixture containing 10% fetal bovine serum, 100 unit/mL penicillin and 100 μ g/mL streptomycin at 37°C in a humidified 5% CO ₂ atmosphere. Two days before experimentation, cells are seeded at a density of 7 \times 10 ⁴ cells/cm ² in a 96-well plate. Cells in a 96-well plate are serum-starved for 4 hr; calcium indicator fura-2 is then loaded into the cells by using Calcium kit II fura-2. In brief, SH-SY5Y cells are incubated with 5 μ M fura-2/AM in the presence of 0.04% Pluronic F-127, a dispersing agent to improve the efficiency of loading with fura-2, and 1.25 mM probenecid, a blocker of organic anion transport to prevent leakage of fura-2 from cells.

After 1 hr incubation at 37°C, fura-2 fluorescence is measured at 500 nm emission after excitation at 340 nm (F340) or 380 nm (F380) using an Infinite M200 plate reader at 37°C. The change in $[Ca^{2+}]_i$ is reflected by the ratio of F340 and F380. To determine the changes in fura-2 fluorescence ratio induced by heavy metal compounds, cells are treated with manganese chloride, lead acetate, cadmium chloride, mercuric chloride and MeHg chloride dissolved in distilled water. We confirmed that the cells adhered to the bottom of the plate after 6 hr exposure to heavy metal compounds. The cells are also treated with three Ca^{2+} channel blockers, lanthanum chloride dissolved in distilled water, verapamil and 2-APB dissolved in DMSO, 30 min before heavy metal exposure. The heavy metal chelator TPEN is dissolved in DMSO and added 3 hr after the stimulation with heavy metals to determine the contribution of endogenous and exogenous heavy metals on fura-2 fluorescence changes. We measured the effect of TPEN (20 μ M) on the fura-2 fluorescence ratio after a 10 min treatment with TPEN, since our preliminary experiments showed that the effect of TPEN on fura-2 fluorescence reached maximum and stabilized within 10 min of the treatment[1].

Solubility Information

Solubility	DMSO: 6 mg/mL (14.13 mM), Sonication is recommended. (< 1 mg/ml refers to the product slightly soluble or insoluble)
------------	--

Preparing Stock Solutions

	1mg	5mg	10mg
1 mM	2.3555 mL	11.7775 mL	23.5549 mL
5 mM	0.4711 mL	2.3555 mL	4.711 mL
10 mM	0.2355 mL	1.1777 mL	2.3555 mL
50 mM	0.0471 mL	0.2355 mL	0.4711 mL

Please select the appropriate solvent to prepare the stock solution, according to the solubility of the product in different solvents. Please use it as soon as possible.

Reference

- Ohkubo M, et al. Heavy metal chelator TPEN attenuates fura-2 fluorescence changes induced by cadmium, mercury and methylmercury. J Vet Med Sci. 2016 Jun 1;78(5):761-7.
- Rahal ON, et al. Chk1 and DNA-PK mediate TPEN-induced DNA damage in a ROS dependent manner in human colon cancer cells. Cancer Biol Ther. 2016 Nov;17(11):1139-1148.

Inhibitor · Natural Compounds · Compound Libraries · Recombinant Proteins

This product is for Research Use Only. Not for Human or Veterinary or Therapeutic Use

Tel: 781-999-4286 E_mail: info@targetmol.com Address: 36 Washington Street, Wellesley Hills, MA 02481