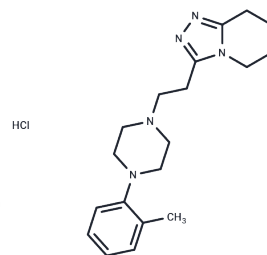


Dapiprazole Hydrochloride

Chemical Properties

CAS No. :	72822-13-0
Formula:	C ₁₉ H ₂₈ ClN ₅
Molecular Weight:	361.92
Appearance:	no data available
Storage:	Powder: -20°C for 3 years In solvent: -80°C for 1 year



Biological Description

Description	Dapiprazole Hydrochloride (Glamidolo Hydrochloride) is an alpha-1-adrenergic antagonist that acts by blocking alpha-adrenergic receptors in the smooth muscle of blood vessels (arteries, arterioles and veins), gastrointestinal tract, and radial smooth muscle of the iris.
Targets(IC50)	Adrenergic Receptor

Solubility Information

Solubility	DMSO: 45 mg/mL (124.34 mM), Sonication is recommended. (< 1 mg/ml refers to the product slightly soluble or insoluble)
------------	---

Preparing Stock Solutions

	1mg	5mg	10mg
1 mM	2.763 mL	13.8152 mL	27.6304 mL
5 mM	0.5526 mL	2.763 mL	5.5261 mL
10 mM	0.2763 mL	1.3815 mL	2.763 mL
50 mM	0.0553 mL	0.2763 mL	0.5526 mL

Please select the appropriate solvent to prepare the stock solution, according to the solubility of the product in different solvents. Please use it as soon as possible.

Reference

- Hogan TS., et al. Dose-response study of dapiprazole HCl in the reversal of mydriasis induced by 2.5% phenylephrine. J Ocul Pharmacol Ther. 1997 Aug;13(4):297-302
- Silvestrini B., et al. Psychopharmacological profile of dapiprazole, a new potential antipsychotic agent. Arzneimittelforschung. 1982;32(6):668-73.
- Lisciani R., et al. General pharmacological properties of dapiprazole, a potential psychotropic agent. Arzneimittelforschung. 1982;32(6):674-8.
- Silvestrini B., et al. Effects of dapiprazole on pupillary size and intraocular pressure in rabbits. Arzneimittelforschung. 1982;32(6):678-81.
- Connor CG., et al. The clinical efficacy of Rev-Eyes in reversing the effects of pupillary dilation. J Am Optom Assoc. 1993 Sep;64(9):634-6.

Inhibitor · Natural Compounds · Compound Libraries · Recombinant Proteins

This product is for Research Use Only. Not for Human or Veterinary or Therapeutic Use

Tel:781-999-4286 E_mail:info@targetmol.com Address:36 Washington Street,Wellesley Hills,MA 02481