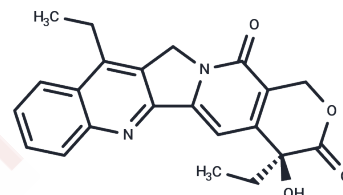


7-Ethylcamptothecin

Chemical Properties

CAS No. :	78287-27-1
Formula:	C ₂₂ H ₂₀ N ₂ O ₄
Molecular Weight:	376.41
Appearance:	no data available
Storage:	Powder: -20°C for 3 years In solvent: -80°C for 1 year



Biological Description

Description	1. 7-Ethylcamptothecin has the superior antitumor activity than CPT. (a). 7-Ethylcamptothecin has a stronger growth-inhibiting activity against tumor cells. (b). 7-Ethylcamptothecin remains in the intestinal tract for a longer time and in higher amounts when administered in vivo.
Targets(IC50)	ADC Cytotoxin

Solubility Information

Solubility	DMSO: 19 mg/mL (50.48 mM), Sonication is recommended. Chloroform, Dichloromethane, Ethyl Acetate, Acetone, etc.: Soluble, (< 1 mg/ml refers to the product slightly soluble or insoluble)
------------	---

Preparing Stock Solutions

	1mg	5mg	10mg
1 mM	2.6567 mL	13.2834 mL	26.5668 mL
5 mM	0.5313 mL	2.6567 mL	5.3134 mL
10 mM	0.2657 mL	1.3283 mL	2.6567 mL
50 mM	0.0531 mL	0.2657 mL	0.5313 mL

Please select the appropriate solvent to prepare the stock solution, according to the solubility of the product in different solvents. Please use it as soon as possible.

Reference

Nagata H , Kaneda N , Furuta T , et al. Action of 7-ethylcamptothecin on tumor cells and its disposition in mice[J]. Cancer Treatment Reports, 1987, 71(4):341-8.

Inhibitor · Natural Compounds · Compound Libraries · Recombinant Proteins

This product is for Research Use Only. Not for Human or Veterinary or Therapeutic Use

Tel:781-999-4286 E_mail:info@targetmol.com Address:36 Washington Street,Wellesley Hills,MA 02481