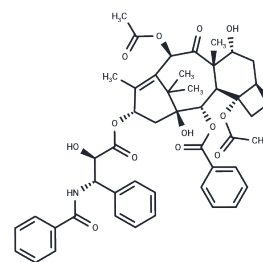


7-epi-Taxol

Chemical Properties

CAS No. :	105454-04-4
Formula:	C ₄₇ H ₅₁ NO ₁₄
Molecular Weight:	853.91
Appearance:	no data available
Storage:	keep away from direct sunlight Powder: -20°C for 3 years In solvent: -80°C for 1 year



Biological Description

Description	1. 7-epi-Taxol (7-Epitaxol) is the major derivative of taxol found in cells and that its presence does not alter, in a major way, the overall biological activity of taxol.
Targets(IC50)	Microtubule Associated

Solubility Information

Solubility	DMSO: 91 mg/mL (106.57 mM), Sonication is recommended. Chloroform, Dichloromethane, Ethyl Acetate, Acetone, etc.: Soluble, (< 1 mg/ml refers to the product slightly soluble or insoluble)
------------	---

Preparing Stock Solutions

	1mg	5mg	10mg
1 mM	1.1711 mL	5.8554 mL	11.7108 mL
5 mM	0.2342 mL	1.1711 mL	2.3422 mL
10 mM	0.1171 mL	0.5855 mL	1.1711 mL
50 mM	0.0234 mL	0.1171 mL	0.2342 mL

Please select the appropriate solvent to prepare the stock solution, according to the solubility of the product in different solvents. Please use it as soon as possible.

Reference

Pessina A , Bagnati R , Alessandri G , et al. Mesenchymal Stromal Cells Uptake and Release Paclitaxel without Reducing its Anticancer Activity[J]. Anti-Cancer Agents in Medicinal Chemistry (Formerly Current Medicinal Chemistry - Anti-Cancer Agents), 2015, 15(3):-.

Inhibitor · Natural Compounds · Compound Libraries · Recombinant Proteins

This product is for Research Use Only. Not for Human or Veterinary or Therapeutic Use

Tel:781-999-4286 E_mail:info@targetmol.com Address:36 Washington Street,Wellesley Hills,MA 02481