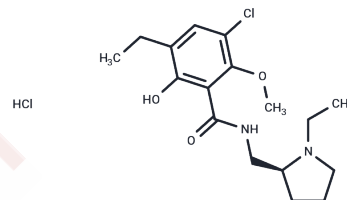


## Eticlopride hydrochloride

## Chemical Properties

CAS No. :	97612-24-3
Formula:	C <sub>17</sub> H <sub>25</sub> ClN <sub>2</sub> O <sub>3</sub> .HCl
Molecular Weight:	377.31
Appearance:	no data available
Storage:	store at low temperature Powder: -20°C for 3 years   In solvent: -80°C for 1 year



## Biological Description

Description	Eticlopride, an antipsychotic, is a Selective dopamine D2/D3 receptor antagonist (K <sub>i</sub> : 0.5 /0.16 nM).
Targets(IC <sub>50</sub> )	Dopamine Receptor

## Solubility Information

Solubility	H <sub>2</sub> O: 30 mg/mL (79.51 mM), Sonication is recommended. (< 1 mg/ml refers to the product slightly soluble or insoluble)
------------	--

## Preparing Stock Solutions

	1mg	5mg	10mg
1 mM	2.6503 mL	13.2517 mL	26.5034 mL
5 mM	0.5301 mL	2.6503 mL	5.3007 mL
10 mM	0.265 mL	1.3252 mL	2.6503 mL
50 mM	0.053 mL	0.265 mL	0.5301 mL

Please select the appropriate solvent to prepare the stock solution, according to the solubility of the product in different solvents. Please use it as soon as possible.

## Reference

Hall H, et al. Some in vitro receptor binding properties of [3H]eticlopride, a novel substituted benzamide, selective for dopamine-D2 receptors in the rat brain[J]. European Journal of Pharmacology, 1985, 111(2):191-199.  
Giuliani D, Ferrari F. Involvement of dopamine receptors in the antipsychotic profile of (-) eticlopride[J]. Physiology & Behavior, 1997, 61(4):563.

**Inhibitor · Natural Compounds · Compound Libraries · Recombinant Proteins**

This product is for Research Use Only. Not for Human or Veterinary or Therapeutic Use

Tel:781-999-4286 E\_mail:info@targetmol.com Address:36 Washington Street,Wellesley Hills,MA 02481