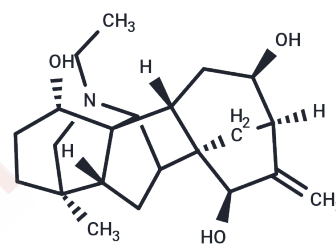


12-Epinapelline

Chemical Properties

CAS No. :	110064-71-6
Formula:	C ₂₂ H ₃₃ NO ₃
Molecular Weight:	359.5
Appearance:	no data available
Storage:	keep away from direct sunlight Powder: -20°C for 3 years In solvent: -80°C for 1 year



Biological Description

Description	12- Epinapelline is a diterpene alkaloid which displays anaesthetic activity as toxic neurological agents. Similar to aconitine, its suggested that modulation of voltage gated Na ⁺ channels are responsible for these observations.
Targets(IC50)	Others

Solubility Information

Solubility	DMSO: 50 mg/mL (139.08 mM),Sonication is recommended. (< 1 mg/ml refers to the product slightly soluble or insoluble)
------------	--

Preparing Stock Solutions

	1mg	5mg	10mg
1 mM	2.7816 mL	13.9082 mL	27.8164 mL
5 mM	0.5563 mL	2.7816 mL	5.5633 mL
10 mM	0.2782 mL	1.3908 mL	2.7816 mL
50 mM	0.0556 mL	0.2782 mL	0.5563 mL

Please select the appropriate solvent to prepare the stock solution, according to the solubility of the product in different solvents. Please use it as soon as possible.

Reference

Atta-ur-Rahman, Atia-tul-Vakhab, Tashkhodzhaev B , et al. Crystal and Molecular Structure of 12-Epinapelline[J]. Chemistry of Natural Compounds, 2005, 41(5):609-610.

Inhibitor · Natural Compounds · Compound Libraries · Recombinant Proteins

This product is for Research Use Only· Not for Human or Veterinary or Therapeutic Use

Tel:781-999-4286 E_mail:info@targetmol.com Address:36 Washington Street,Wellesley Hills,MA 02481