

TAPI1

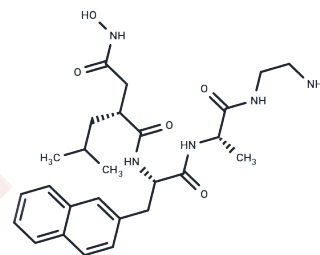
Chemical Properties

CAS No. : 163847-77-6

Formula: C₂₆H₃₇N₅O₅

Molecular Weight: 499.6

Appearance: no data available

Storage: store at low temperature, keep away from moisture
Powder: -20°C for 3 years | In solvent: -80°C for 1 year

Biological Description

Description	TAPI1 (TAPI) , an ADAM17/TACE inhibitor, inhibits shedding of cytokine receptors.
Targets(IC50)	MMP
In vitro	TAPI-1 prevents unstimulated and PMA-induced release of the soluble forms of TNF-alpha, p60 TNFR, and IL-6R from the monocytic cell line, THP-1, and from human peripheral blood monocytes. TAPI also inhibits LPS-induced shedding of the p60 TNFR and TNF-alpha from monocytes. [1] TAPI-1 inhibits TACE-dependent constitutive release of co-transfected APP(695). [2] TAPI-1 attenuates Ang II-induced EGFR transactivation and cell proliferation in human HSC line LI90. [3] TAPI-1 with the EGFR inhibitor AG1478 exhibits deactivated AREG/EGFR/ERK signaling pathway and reduces pro-inflammatory cytokines release in pSS salivary gland-derived epithelial cells. [4]
Cell Research	Five thousand cells are seeded into each well of 96-well plates and their viability is assessed by CellTiter-Glo Luminescent Cell Viability assay. Upon serum deprivation for 24 h, the cells are treated with Ang II for 60 h with and without pretreatment with each inhibitor and antagonist. The assay substrates are then added to each well on the plate and the samples are evaluated using a luminometer. (Only for Reference)

Solubility Information

Solubility	Ethanol: 92 mg/mL (184.15 mM), Sonication is recommended. H ₂ O: 55 mg/mL (110.09 mM), Sonication is recommended. DMSO: 92 mg/mL (184.15 mM), Sonication is recommended. (< 1 mg/ml refers to the product slightly soluble or insoluble)
------------	---

A DRUG SCREENING EXPERT

Preparing Stock Solutions

	1mg	5mg	10mg
1 mM	2.0016 mL	10.008 mL	20.016 mL
5 mM	0.4003 mL	2.0016 mL	4.0032 mL
10 mM	0.2002 mL	1.0008 mL	2.0016 mL
50 mM	0.040 mL	0.2002 mL	0.4003 mL

Please select the appropriate solvent to prepare the stock solution, according to the solubility of the product in different solvents. Please use it as soon as possible.

Reference

Müllberg J, et al. J Immunol. 1995, 155(11), 5198-5205
Slack BE, et al. Biochem J. 2001, 357(Pt 3), 787-794.
Oikawa H, et al. Life Sci. 2014, 97(2), 137-144.
Sisto M, et al. 2014. DOI 10.12007/s10238-2014-0279-4.

Inhibitor · Natural Compounds · Compound Libraries · Recombinant Proteins

This product is for Research Use Only. Not for Human or Veterinary or Therapeutic Use

Tel: 781-999-4286 E_mail: info@targetmol.com Address: 36 Washington Street, Wellesley Hills, MA 02481