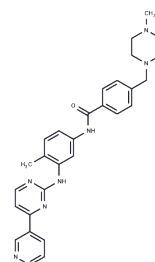


Chemical Properties

Storage: store at low temperature
Powder: -20°C for 3 years | In solvent: -80°C for 1 year



Description	Imatinib (STI571) is a multi-targeted receptor tyrosine kinase inhibitor that selectively inhibits the kinase activities of BCR/ABL, v-Abl, PDGFR, and c-kit with oral activity. Imatinib has antitumor activity for the treatment of chronic granulocytic leukemia.
Targets(IC50)	Bcr-Abl,Autophagy,c-Kit,PDGFR,SARS-CoV
In vitro	<p>METHODS: Human, mouse and rat osteosarcoma cells were treated with Imatinib (1-40 μM) for 72 h, and cell viability was measured using XTT assay.</p> <p>RESULTS: Imatinib reduced the number of live osteosarcoma cells in a dose-dependent manner, with 72 h IC50s of 20 μM (MG-63), 11 μM (HOS), 23 μM (MOS-J), 15 μM (POS-1), and 9 μM (OSRGA). [1]</p> <p>METHODS: Human gastric cancer cells AGS, MKN45 and SNU638 were treated with Imatinib (30-100 μM) for 48 h. Apoptosis was detected using Flow Cytometry.</p> <p>RESULTS: The percentage of Annexin V/PI-positive cells was significantly increased, indicating that Imatinib treatment increased early apoptosis of tumor cells. [2]</p>
In vivo	<p>METHODS: To investigate antitumor activity, Imatinib (25-100 mg/kg) was administered orally to mice bearing undifferentiated POS-1 or mixed osteoblast/osteolytic MOS-J osteosarcoma tumors once daily for 21 or 43 days.</p> <p>RESULTS: Imatinib inhibited osteosarcoma progression in vivo. [1]</p> <p>METHODS: To study the effects on multiple sclerosis (MS), Imatinib (60 mg/kg) was administered orally six times per week for two weeks to an EAE C57BL/6 mouse model.</p> <p>RESULTS: Imatinib had beneficial effects on EAE by reducing disease severity and delaying onset.Imatinib and its potential therapeutic effects and immunomodulatory properties may be considered for the treatment of multiple sclerosis. [3]</p>
Cell Research	M-07e cells were grown in serum-free RPMI 1640 at 37°C for approximately 18 hours before they were incubated for 90 minutes in the presence of various concentrations of STI 571. The cells were then pelleted and resuspended in 1 mL RPMI 1640. STI 571 was added to each tube to achieve the same concentration used during the 90 minutes of preincubation. The cells were then incubated with inhibitor and growth factor (SLF or GM-CSF) for 15 minutes at 37°C. Subsequently, the cell pellets were lysed with 100 to 250 μ L of protein lysis buffer (50 mmol/L Tris, 150 mmol/L sodium chloride, 1% NP-40, and 0.25% deoxycholate, with addition of the inhibitors aprotinin, leupeptin, pepstatin, phenylmethyl sulfonyl fluoride, and sodium orthovanadate). Western immunoblot analysis was performed as previously described.41Experiments with HMC-1 cells were performed in the same way except that neither SLF nor GM-CSF was added [1].

Animal Research	Swiss mice (nu/nu, female), weighing 30 g, 6 - 8 weeks old, were bred in the animal facilities, maintained under specific pathogen-free conditions with artificial lighting (12 hr light/12 hr dark cycle) and fed a regular diet and water ad libitum. For therapeutic trials, the tumor-bearing mice were randomly divided into equivalent groups of 5 to 12 animals and mice were treated as soon as the xenografted tumors reached a diameter of 5 mm (or a tumor volume of approximately 60 mm ³). Four different human tumors were used: the SCLC6, SCLC61, SCLC 74 and SCLC108 small cell lung cancers. STI571 was administered at a total dosage of 70 or 100 mg/kg per day in 1 or 2 intraperitoneal injections, with or without etoposide plus ifosfamide or topotecan. STI571 was diluted in 150 l of H ₂ O and administered on different days, as indicated. Etoposide and ifosfamide were diluted in 200 l of 0.9% sodium chloride, and topotecan was diluted in 150 l of 0.9% sodium chloride. The control group received injections according to the same schedule as experimentally treated mice. All mice were weighed once weekly. Tumor growth was monitored by measuring 2 perpendicular diameters with calipers. Tumor volume (V) and the relative tumor volume (RTV) were calculated as: $V = a^2 \times b/2$, where a is the width (large diameter) and b the length (small. diameter) of the tumor in millimeters, and. $RTV = V_x/V_i$, where V_x is the mean tumor volume in cubic millimeters at any given time and V_i is the mean initial tumor volume in cubic millimeters at the start of treatment. Mice were ethically sacrificed when the tumor volume reached 2,500 mm ³ [5].
-----------------	--

Solubility Information

Solubility	10% DMSO+40% PEG300+5% Tween 80+45% Saline: 2.5 mg/mL (5.06 mM),Solution. DMSO: 25 mg/mL (50.65 mM),Sonication is recommended. (< 1 mg/ml refers to the product slightly soluble or insoluble)
------------	--

Preparing Stock Solutions

	1mg	5mg	10mg
1 mM	2.0259 mL	10.1297 mL	20.2593 mL
5 mM	0.4052 mL	2.0259 mL	4.0519 mL
10 mM	0.2026 mL	1.013 mL	2.0259 mL
50 mM	0.0405 mL	0.2026 mL	0.4052 mL

Please select the appropriate solvent to prepare the stock solution, according to the solubility of the product in different solvents. Please use it as soon as possible.

Reference

- Gobin B, et al. Imatinib mesylate exerts anti-proliferative effects on osteosarcoma cells and inhibits the tumour growth in immunocompetent murine models. *PLoS One*. 2014 Mar 5;9(3):e90795.
- Wang B, He B S, Ruan X L, et al. An integrated microfluidics platform with high-throughput single-cell cloning array and concentration gradient generator for efficient cancer drug effect screening. *Military Medical Research*. 2022, 9(1): 1-17.
- Li Q, Huang Z, Peng Y, et al. RanBP3 Regulates Proliferation, Apoptosis and Chemosensitivity of Chronic Myeloid Leukemia Cells via Mediating SMAD2/3 and ERK1/2 Nuclear Transport. *Frontiers in Oncology*. 2021: 3349.
- Kim JL, et al. Imatinib-induced apoptosis of gastric cancer cells is mediated by endoplasmic reticulum stress. *Oncol Rep*. 2019 Mar;41(3):1616-1626.
- Azizi G, et al. Effects of imatinib mesylate in mouse models of multiple sclerosis and in vitro determinants. *Iran J Allergy Asthma Immunol*. 2014 Jun;13(3):198-206.
- Zhou D, Yang S, Yan H, et al. SC75741, a novel c-Abl inhibitor, promotes the clearance of TDP25 aggregates via ATG5-dependent autophagy pathway. *Frontiers in Pharmacology*. 2021: 2891.
- Zeng D, Gao M, Zheng R, et al. The HSP90 inhibitor KW-2478 depletes the malignancy of BCR/ABL and overcomes the imatinib-resistance caused by BCR/ABL amplification. *Experimental Hematology & Oncology*. 2022, 11(1): 1-14
- Yildiz C, et al. Effect of imatinib on growth of experimental endometriosis in rats. *Eur J Obstet Gynecol Reprod Biol*. 2016 Feb;197:159-63.
- Decaudin D, et al. In vivo efficacy of STI571 in xenografted human small cell lung cancer alone or combined with chemotherapy. *Int J Cancer*. 2005 Feb 20;113(5):849-56.
- Zeng D, Gao M, Zheng R, et al. The HSP90 inhibitor KW-2478 depletes the malignancy of BCR/ABL and overcomes the imatinib-resistance caused by BCR/ABL amplification. *Experimental Hematology & Oncology*. 2022, 11(1): 1-14
- Dong L, Shen S, Chen W, et al. Discovery of Novel Inhibitors Targeting Human O-GlcNAcase: Docking-Based Virtual Screening, Biological Evaluation, Structural Modification, and Molecular Dynamics Simulation[J]. *Journal of chemical information and modeling*. 2019, 59(10): 4374-4382.
- Liu H M, Guo C L, Zhang Y F, et al. Leonurine-repressed miR-18a-5p/SOCS5/JAK2/STAT3 axis activity disrupts CML malignancy. *Frontiers in Pharmacology*. 2021, 12.
- Liu H M, Guo C L, Zhang Y F, et al. Leonurine-repressed miR-18a-5p/SOCS5/JAK2/STAT3 axis activity disrupts CML malignancy[J]. *Frontiers in Pharmacology*. 2021, 12.
- Dong L, Shen S, Chen W, et al. Discovery of Novel Inhibitors Targeting Human O-GlcNAcase: Docking-Based Virtual Screening, Biological Evaluation, Structural Modification, and Molecular Dynamics Simulation. *Journal of chemical information and modeling*. 2019, 59(10): 4374-4382.
- Qin R, Wang T, He W, et al. Jak2/STAT6/c-Myc pathway is vital to the pathogenicity of Philadelphia-positive acute lymphoblastic leukemia caused by P190BCR-ABL. *Cell Communication and Signaling*. 2023, 21(1): 27.
- He W, Liu S, Wei W, et al. mTOR inhibition by AZD2014 alleviates BCR::ABL1 independent imatinib resistance through enhancing autophagy in CML resistant cells. *American Journal of Cancer Research*. 2024, 14(6): 2770.

Inhibitor · Natural Compounds · Compound Libraries · Recombinant Proteins

This product is for Research Use Only. Not for Human or Veterinary or Therapeutic Use

Tel: 781-999-4286 E_mail: info@targetmol.com Address: 36 Washington Street, Wellesley Hills, MA 02481