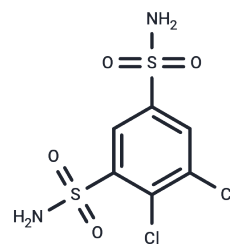


## Dichlorphenamide

## Chemical Properties

CAS No. : 120-97-8  
 Formula: C<sub>6</sub>H<sub>6</sub>Cl<sub>2</sub>N<sub>2</sub>O<sub>4</sub>S<sub>2</sub>  
 Molecular Weight: 305.16  
 Appearance: no data available  
 Storage: Powder: -20°C for 3 years | In solvent: -80°C for 1 year



## Biological Description

Description	Dichlorphenamide (Diclofenamide) is a carbonic anhydrase inhibitor that is used in the treatment of glaucoma.
Targets(IC50)	Carbonic Anhydrase

## Solubility Information

Solubility	H <sub>2</sub> O: < 1 mg/mL (insoluble or slightly soluble), Ethanol: 31 mg/mL (101.59 mM), Sonication is recommended. DMSO: 55 mg/mL (180.23 mM), Sonication is recommended. (< 1 mg/ml refers to the product slightly soluble or insoluble)
------------	--------------------------------------------------------------------------------------------------------------------------------------------------------------------------------------------------------------------------------------------------------

## Preparing Stock Solutions

	1mg	5mg	10mg
1 mM	3.277 mL	16.3848 mL	32.7697 mL
5 mM	0.6554 mL	3.277 mL	6.5539 mL
10 mM	0.3277 mL	1.6385 mL	3.277 mL
50 mM	0.0655 mL	0.3277 mL	0.6554 mL

Please select the appropriate solvent to prepare the stock solution, according to the solubility of the product in different solvents. Please use it as soon as possible.

## Reference

Greig SL. Drugs. 2016 Mar;76(4):501-7.  
 Fontaine B, Phillips LH 2nd. Neurology. 2016 Feb 10.

Inhibitor · Natural Compounds · Compound Libraries · Recombinant Proteins

This product is for Research Use Only. Not for Human or Veterinary or Therapeutic Use

Tel: 781-999-4286 E\_mail: info@targetmol.com Address: 36 Washington Street, Wellesley Hills, MA 02481