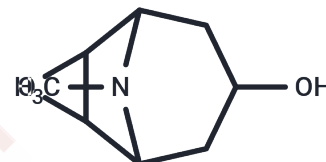


Scopine

Chemical Properties

CAS No. :	498-45-3
Formula:	C ₈ H ₁₃ NO ₂
Molecular Weight:	155.19
Appearance:	no data available
Storage:	Powder: -20°C for 3 years In solvent: -80°C for 1 year



Biological Description

Description	Scopine (6,7-Epoxytropine), the metabolite of anisodine, is an α 1-adrenergic receptor agonist used in the therapy of acute circulatory shock.
Targets(IC50)	Adrenergic Receptor

Solubility Information

Solubility	DMSO: 50 mg/mL (322.19 mM), Sonication is recommended. H ₂ O: < 1 mg/mL (insoluble or slightly soluble), Ethanol: < 1 mg/mL (insoluble or slightly soluble), (< 1 mg/ml refers to the product slightly soluble or insoluble)
------------	--

Preparing Stock Solutions

	1mg	5mg	10mg
1 mM	6.4437 mL	32.2186 mL	64.4371 mL
5 mM	1.2887 mL	6.4437 mL	12.8874 mL
10 mM	0.6444 mL	3.2219 mL	6.4437 mL
50 mM	0.1289 mL	0.6444 mL	1.2887 mL

Please select the appropriate solvent to prepare the stock solution, according to the solubility of the product in different solvents. Please use it as soon as possible.

Reference

Wang X, et al. Bioconj Chem. 2014 Nov 19;25(11):2046-54.

Inhibitor · Natural Compounds · Compound Libraries · Recombinant Proteins

This product is for Research Use Only. Not for Human or Veterinary or Therapeutic Use

Tel: 781-999-4286 E_mail: info@targetmol.com Address: 36 Washington Street, Wellesley Hills, MA 02481