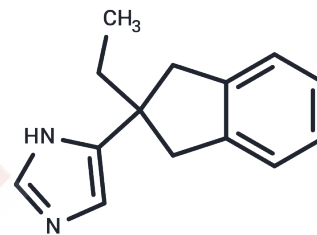


Atipamezole

Chemical Properties

CAS No. :	104054-27-5
Formula:	C ₁₄ H ₁₆ N ₂
Molecular Weight:	212.29
Appearance:	no data available
Storage:	Powder: -20°C for 3 years In solvent: -80°C for 1 year



Biological Description

Description	Atipamezole (Antisedan) is a synthetic α_2 adrenergic receptor antagonist. It has also been researched in humans as a potential anti-Parkinsonian drug.
Targets(IC50)	Adrenergic Receptor
In vitro	The affinity of atipamezole for α_2 -adrenoceptors and its α_2/α_1 selectivity ratio are considerably higher than yohimbine. Atipamezole is not selective for subtypes of α_2 -adrenoceptors. It has negligible affinity for 5-HT ₁ , 5-HT ₂ and I ₂ bindings sites[1].
In vivo	Atipamezole is well-tolerated in rodents and exhibits modest cardiovascular effects (0.01–1 mg/kg, i.v.) in anesthetized, normotensive rats. It is frequently used by veterinarians to reverse sedation or anesthesia in animals. Atipamezole enhances sexual activity in rats and monkeys and increases pain-related responses in animals with sustained nociception by blocking noradrenergic feedback inhibition of pain. At low doses, it improves alertness, selective attention, planning, learning, and recall in experimental animals, although not necessarily affecting short-term working memory [1].

Solubility Information

Solubility	DMSO: 39 mg/mL (183.71 mM),Sonication is recommended. Ethanol: 39 mg/mL (183.71 mM),Sonication is recommended. H ₂ O: < 1 mg/mL (insoluble or slightly soluble), (< 1 mg/ml refers to the product slightly soluble or insoluble)
------------	--

Preparing Stock Solutions

	1mg	5mg	10mg
1 mM	4.7105 mL	23.5527 mL	47.1054 mL
5 mM	0.9421 mL	4.7105 mL	9.4211 mL
10 mM	0.4711 mL	2.3553 mL	4.7105 mL
50 mM	0.0942 mL	0.4711 mL	0.9421 mL

Please select the appropriate solvent to prepare the stock solution, according to the solubility of the product in different solvents. Please use it as soon as possible.

Reference

Pertovaara A, et al. Pharmacological properties, central nervous system effects, and potential therapeutic applications of atipamezole, a selective α_2 -adrenoceptor antagonist. CNS Drug Rev. 2005 Autumn;11(3):273-88.

Inhibitor · Natural Compounds · Compound Libraries · Recombinant Proteins

This product is for Research Use Only · Not for Human or Veterinary or Therapeutic Use

Tel: 781-999-4286 E_mail: info@targetmol.com Address: 36 Washington Street, Wellesley Hills, MA 02481