

Larotrectinib sulfate

Chemical Properties

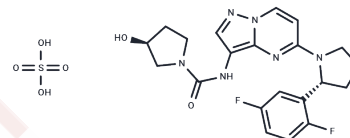
CAS No. : 1223405-08-0

Formula: C₂₁H₂₂F₂N₆O₂·H₂O₄S

Molecular Weight: 526.51

Appearance: no data available

Storage: Powder: -20°C for 3 years | In solvent: -80°C for 1 year



Biological Description

Description	Larotrectinib sulfate (LOXO-101 sulfate) is an oral active and specific ATP-competitive inhibitor of tropomyosin receptor kinases (TRK).
Targets(IC50)	Apoptosis,Trk receptor
In vitro	Larotrectinib is a specific kinase inhibitor with nanomolar activity against TRKA/TRKB/TRKC but no other notable kinase inhibition (1 μM). Larotrectinib hasn't the inhibitory of the proliferation of Ba/F3 cells expressing other oncogene targets (EGFR, ROS1 or ALK) or of lung and colorectal cell lines that do not harbor an NTRK1 fusion. It induces cell-cycle arrest in G1 and apoptosis of KM12 cells.
In vivo	Early/sustained but not late/acute administration of ARRY-470(LOXO-101) obviously attenuates bone cancer pain and blocks the ectopic sprouting of sensory nerve fibers and the formation of neuroma-like structures in the tumor-bearing bone, but no significant inhibition for tumor growth or bone remodeling. It has very limited ability crossing of the blood-brain barrier.
Cell Research	Concentrations: 10,100,1000 nM. Method: Ba/F3 cells expressing MPRIP-NTRK1 (RIP-TRKA) or EV were lysed after 5 h of treatment with the indicated doses of drugs (ARRY-470; G,gefitinib 1,000 nM) or DMSO control.The cell lysate is used for western blot analysis.
Animal Research	Animal Models: Adult male C3H/HeJ mice. Formulation: Labrafac; polygly-colyzed glyceride. Dosages: 10-100 mg/kg. Administration: p.o.

Solubility Information

Solubility	DMSO: 50 mg/mL (94.96 mM),Sonication is recommended. Ethanol: 10 mg/mL (18.99 mM),Sonication is recommended. H2O: < 1 mg/mL (insoluble or slightly soluble), (< 1 mg/ml refers to the product slightly soluble or insoluble)
------------	---

A DRUG SCREENING EXPERT

Preparing Stock Solutions

	1mg	5mg	10mg
1 mM	1.8993 mL	9.4965 mL	18.993 mL
5 mM	0.3799 mL	1.8993 mL	3.7986 mL
10 mM	0.1899 mL	0.9496 mL	1.8993 mL
50 mM	0.038 mL	0.1899 mL	0.3799 mL

Please select the appropriate solvent to prepare the stock solution, according to the solubility of the product in different solvents. Please use it as soon as possible.

Reference

Ghilardi JR, et al. Mol Pain. 2010, 6:87.

Vaishnavi A, et al. Nat Med. 2013, 19(11):1469-72.

Inhibitor · Natural Compounds · Compound Libraries · Recombinant Proteins

This product is for Research Use Only · Not for Human or Veterinary or Therapeutic Use

Tel:781-999-4286

E_mail:info@targetmol.com

Address:36 Washington Street,Wellesley Hills,MA 02481