

Oleuropein

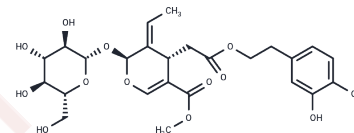
Chemical Properties

CAS No. : 32619-42-4

Formula: C₂₅H₃₂O₁₃

Molecular Weight: 540.51

Appearance: no data available

Storage: store at low temperature
Powder: -20°C for 3 years | In solvent: -80°C for 1 year

Biological Description

Description	Oleuropein is an antioxidant polyphenol isolated from olive leaf.
Targets(IC50)	Apoptosis,Aromatase,PPAR,ROS
In vitro	In both J774A.1 cells and primary mouse macrophages, Oleuropein increases LPS-induced NO production. [1] Oleuropein prevents oxidative myocardial injury induced by ischemia and reperfusion. [2] In TF-1a; 786-O, T-47D, RPMI-7951, LoVo, and NL-Fib cells, Oleuropein inhibits cell proliferation and migration. [3]
In vivo	In swiss albino mice that spontaneously develop soft tissue sarcomas, Oleuropein (i.p. or p.o.) completely regresses tumors. [3] In rats, Oleuropein (40 mg/kg, p.o.) protects from cardiac remodeling process after isoproterenol-induced myocardial infarction through inhibiting angiotensin-converting enzyme activity. [4]

Solubility Information

Solubility	DMSO: 50 mg/mL (92.51 mM),Sonication is recommended. H ₂ O: 92 mg/mL (170.21 mM),Sonication is recommended. Ethanol: 93 mg/mL (172.06 mM),Sonication is recommended. (< 1 mg/ml refers to the product slightly soluble or insoluble)
------------	--

Preparing Stock Solutions

	1mg	5mg	10mg
1 mM	1.8501 mL	9.2505 mL	18.501 mL
5 mM	0.370 mL	1.8501 mL	3.7002 mL
10 mM	0.185 mL	0.9251 mL	1.8501 mL
50 mM	0.037 mL	0.185 mL	0.370 mL

Please select the appropriate solvent to prepare the stock solution, according to the solubility of the product in different solvents. Please use it as soon as possible.

Reference

Visioli F, et al. Life Sci. 1998,62(6), 541-546.

Manna C, et al. J Nutr Biochem. 2004, 15(8), 461-466.

Hamdi HK, et al. Biochem Biophys Res Commun. 2005, 334(3), 769-778.

Mnafgui K, et al. Toxicol Mech Methods. 2015, 1-9.

Inhibitor · Natural Compounds · Compound Libraries · Recombinant Proteins

This product is for Research Use Only· Not for Human or Veterinary or Therapeutic Use

Tel:781-999-4286

E_mail:info@targetmol.com

Address:36 Washington Street,Wellesley Hills,MA 02481