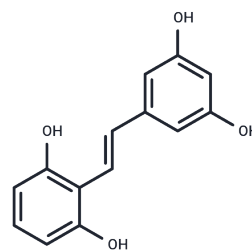


Gnetol

Chemical Properties

| | |
|-------------------|--|
| CAS No. : | 86361-55-9 |
| Formula: | C ₁₄ H ₁₂ O ₄ |
| Molecular Weight: | 244.24 |
| Appearance: | no data available |
| Storage: | Powder: -20°C for 3 years In solvent: -80°C for 1 year |



Biological Description

| | |
|----------------------------|--|
| Description | Gnetol competitively inhibits butyrylcholinesterase (IC ₅₀ : 1.3 μM). Gnetol has a strong inhibitory effect on murine tyrosinase activity. Gnetol significantly suppresses melanin biosynthesis in murine B16 melanoma cells. It is active in the inhibition of arachidonic acid (AA)-induced platelet aggregation. |
| Targets(IC ₅₀) | HDAC, AChR, COX, Tyrosinase |

Solubility Information

| | |
|------------|---|
| Solubility | DMSO: 45 mg/mL (184.25 mM), Sonication is recommended. (< 1 mg/mL refers to the product slightly soluble or insoluble) |
|------------|---|

Preparing Stock Solutions

| | 1mg | 5mg | 10mg |
|-------|-----------|------------|------------|
| 1 mM | 4.0943 mL | 20.4717 mL | 40.9433 mL |
| 5 mM | 0.8189 mL | 4.0943 mL | 8.1887 mL |
| 10 mM | 0.4094 mL | 2.0472 mL | 4.0943 mL |
| 50 mM | 0.0819 mL | 0.4094 mL | 0.8189 mL |

Please select the appropriate solvent to prepare the stock solution, according to the solubility of the product in different solvents. Please use it as soon as possible.

Reference

- Ohguchi K, et al. Gnetol as a potent tyrosinase inhibitor from genus Gnetum.[J]. Journal of the Agricultural Chemical Society of Japan, 2003, 67(3):663-665.
- Kloypan C, et al. Stilbenoids from Gnetum macrostachyum Attenuate Human Platelet Aggregation and Adhesion[J]. Phytotherapy Research, 2012, 26(10):1564-1568.
- Sermboonpaisarn T, Sawasdee P. Potent and selective butyrylcholinesterase inhibitors from Ficus foveolata.[J]. Fitoterapia, 2012, 83(4):780-784.

Inhibitor · Natural Compounds · Compound Libraries · Recombinant Proteins

This product is for Research Use Only· Not for Human or Veterinary or Therapeutic Use

Tel:781-999-4286 E_mail:info@targetmol.com Address:36 Washington Street,Wellesley Hills,MA 02481