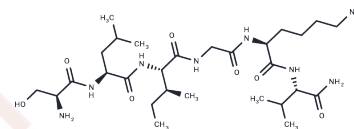


## Protease-Activated Receptor-2, amide

## Chemical Properties

CAS No. :	190383-13-2
Formula:	C <sub>28</sub> H <sub>54</sub> N <sub>8</sub> O <sub>7</sub>
Molecular Weight:	614.78
Appearance:	no data available
Storage:	keep away from moisture
	Powder: -20°C for 3 years   In solvent: -80°C for 1 year



## Biological Description

Description	Protease-Activated Receptor-2, amide (SLIGKV-NH <sub>2</sub> ) is an agonist of PAR <sub>2</sub> with an IC <sub>50</sub> of 10.4 M.
Targets(IC <sub>50</sub> )	Protease-activated Receptor

## Solubility Information

Solubility	H <sub>2</sub> O: 33.33 mg/mL (54.21 mM), Sonication is recommended. ( $< 1$ mg/ml refers to the product slightly soluble or insoluble)
------------	--

## Preparing Stock Solutions

	1mg	5mg	10mg
1 mM	1.6266 mL	8.133 mL	16.266 mL
5 mM	0.3253 mL	1.6266 mL	3.2532 mL
10 mM	0.1627 mL	0.8133 mL	1.6266 mL
50 mM	0.0325 mL	0.1627 mL	0.3253 mL

Please select the appropriate solvent to prepare the stock solution, according to the solubility of the product in different solvents. Please use it as soon as possible.

## Reference

Kanke T, Ishiwata H, Kabeya M, et al. Binding of a highly potent protease-activated receptor-2 (PAR<sub>2</sub>) activating peptide, [ $\sim$ 3H]2-furoyl-LIGRL-NH<sub>2</sub>, to human PAR<sub>2</sub>[J]. British Journal of Pharmacology, 2005, 145(2):p.255-263.

**Inhibitor · Natural Compounds · Compound Libraries · Recombinant Proteins**

This product is for Research Use Only. Not for Human or Veterinary or Therapeutic Use

Tel: 781-999-4286 E\_mail: info@targetmol.com Address: 36 Washington Street, Wellesley Hills, MA 02481