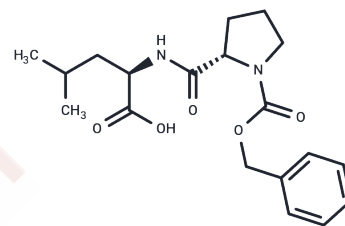


## Prolylleucine

## Chemical Properties

CAS No. : 61596-47-2  
 Formula: C<sub>19</sub>H<sub>26</sub>N<sub>2</sub>O<sub>5</sub>  
 Molecular Weight: 362.42  
 Appearance: no data available  
 Storage: keep away from moisture  
 Powder: -20°C for 3 years | In solvent: -80°C for 1 year



## Biological Description

Description	Prolylleucine (((Benzyloxy)carbonyl)-L-prolyl-D-leucine) is a dipeptide containing branched-chain amino acids.
Targets(IC50)	Others

## Solubility Information

Solubility	DMSO: 100 mg/mL (275.92 mM), Sonication is recommended. ( $< 1$ mg/ml refers to the product slightly soluble or insoluble)
------------	---

## Preparing Stock Solutions

	1mg	5mg	10mg
1 mM	2.7592 mL	13.7961 mL	27.5923 mL
5 mM	0.5518 mL	2.7592 mL	5.5185 mL
10 mM	0.2759 mL	1.3796 mL	2.7592 mL
50 mM	0.0552 mL	0.2759 mL	0.5518 mL

Please select the appropriate solvent to prepare the stock solution, according to the solubility of the product in different solvents. Please use it as soon as possible.

## Reference

Hebert EM, et al. Characterization of the pattern of alphas1- and beta-casein breakdown and release of a bioactive peptide by a cell envelope proteinase from

Inhibitor · Natural Compounds · Compound Libraries · Recombinant Proteins

This product is for Research Use Only. Not for Human or Veterinary or Therapeutic Use

Tel: 781-999-4286 E\_mail: info@targetmol.com Address: 36 Washington Street, Wellesley Hills, MA 02481