



# Safety Data Sheet - Version 5.0

Preparation Date 12/10/2014

Latest Revision Date (If Revised)

## 1. IDENTIFICATION OF THE SUBSTANCE/MIXTURE AND OF THE COMPANY/UNDERTAKING

### 1.1 Product Identifier

Chemical Name Benzyl Chloromethyl Ether (90%)

Catalogue # B233705

### 1.2 Relevant Identified Uses of the Substance or Mixture and Uses Advised Against

Product Uses To be used only for scientific research and development. Not for use in humans or animals.

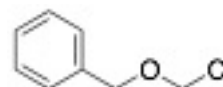
### 1.3 Details of the Supplier of the Safety Data Sheet

Company Toronto Research Chemicals  
2 Brisbane Road  
Toronto, ON M3J 2J8  
CANADA

Telephone +14166659696

FAX +14166654439

Email orders.trc@lgcgroup.com



### 1.4 Emergency Telephone Number

Emergency# +1(416) 665-9696 between 0800-1700 (GMT-5)

## 2. HAZARDS IDENTIFICATION

### 2.1/2.2 Classification of the Substance or Mixture and Label Elements

#### GHS Hazards Classification (According to EU Regulation 1272/2008 and US OSHA 1910.1200)

Flammable Liquids (Category 4)

Acute Toxicity, Oral (Category 4)

Acute Toxicity, Dermal (Category 4)

Acute Toxicity, Inhalation (Category 3)

Skin Corrosion (Category 1B)

Eye Damage/Irritation (Category 1)

#### GHS Hazards Identification (According to EU Regulation 1272/2008 and US OSHA 1910.1200)

Signal Word Danger



#### GHS Hazard Statements

H227 Combustible liquid and vapour.

H302 Harmful if swallowed.

H312 Harmful in contact with skin.

H331 Toxic if inhaled.

H314 Causes severe skin burns and eye damage.

H318 Causes serious eye damage.

#### GHS Precautionary Statements

P210 Keep away from heat, hot surfaces, sparks, open flames and other ignition sources. No smoking.

P261 Avoid breathing dust/fume/gas/mist/vapours/spray

P280 Wear protective gloves/protective clothing/eye protection/face protection.

P301/P312 IF SWALLOWED: Call a POISON CENTER or doctor/physician if you feel unwell.

P303/P361/P353 IF ON SKIN (or hair): Remove/Take off immediately all contaminated clothing. Rinse skin with water/shower.

## **2.3 Unclassified Hazards/Hazards Not Otherwise Classified**

No data available

## **3. COMPOSITION/INFORMATION ON INGREDIENTS**

### **3.1 Substances**

**Molecular Formula:** C<sub>7</sub>H<sub>7</sub>ClO

**Molecular Weight:** 156.61

**CAS Registry #:** 3587-60-8

**EC#:**

#### **Synonyms**

Benzyl Chloromethyl Ether  
Benzyloxymethyl Chloride  
Chloromethyl Benzyl Ether  
Chloromethyl Phenylmethyl Ether  
BOMCI

### **3.2 Mixtures**

Not a mixture

## **4. FIRST AID MEASURES**

### **4.1 Description of First Aid Measures**

#### **General Advice**

If medical attention is required, show this safety data sheet to the doctor.

#### **If Inhaled**

If inhaled, move casualty to fresh air. If not breathing, give artificial respiration and consult a physician.

#### **In Case of Skin Contact**

Remove contaminated clothing and shoes. Wash off with soap and plenty of water. Take victim immediately to hospital. Consult a physician.

#### **In Case of Eye Contact**

**Rinse immediately with plenty of water, also under the eyelids, for at least 15 minutes. Remove contact lenses, if present and easy to do. Continue rinsing. Keep eye wide open while rinsing. Do not rub affected area. Get medical attention if irritation develops and persists.**

#### **If Swallowed**

Never give anything by mouth to an unconscious person. Rinse mouth with water. Do NOT induce vomiting unless advised to do so by a physician or Poison Control Center. Seek medical attention.

Self-protection of the first aider

Avoid contact with skin, eyes or clothing. Wear personal protective clothing (see section 8).

### **4.2 Most Important Symptoms and Effects, Both Acute and Delayed**

No data available

### **4.3 Indication of any Immediate Medical Attention and Special Treatment Needed**

No data available

## **5. FIREFIGHTING MEASURES**

### **5.1 Extinguishing Media**

Use water spray, alcohol-resistant foam, dry chemical or carbon dioxide.

### **5.2 Special Hazards Arising from the Substance or Mixture**

Carbon oxides, Hydrogen chloride

### **5.3 Advice for Firefighters**

Wear self contained breathing apparatus for fire fighting if necessary. Use personal protection equipment.

### **5.4 Further Information**

No data available.

## **6. ACCIDENTAL RELEASE MEASURES**

### **6.1 Personal Precautions, Protective Equipment and Emergency Procedures**

Use recommended personal protective equipment (see Section 8). Adequate ventilation must be provided to ensure vapours or mists are not inhaled. Vapours are heavier than air and may accumulate in low areas. All sources of ignition, including sources of static discharge, must be removed from area.

### **6.2 Environmental Precautions**

Material should not be allowed to enter the environment. Prevent further spillage or discharge into drains, if safe to do so.

### **6.3 Methods and Materials for Containment and Cleaning Up**

Contain the spill and then collect using non-combustible absorbent material (such as clay, diatomaceous earth, vermiculite or other appropriate material). Place material in a suitable, sealable container and then dispose according to local/national regulations and guidance (see Section 13).

### **6.4 Reference to Other Sections**

For protective equipment, refer to Section 8. For disposal, see Section 13.

## **7. HANDLING AND STORAGE**

### **7.1 Precautions for Safe Handling**

Avoid contact with skin and eyes. Ventilation and proper handling are to be used to prevent the formation of vapours and mists. Remove all sources of ignition and take precautionary measures to prevent the buildup of electrostatic discharge (ground and bond containers as appropriate). No smoking, eating or drinking around this material. Wash hands after use.

### **7.2 Conditions for Safe Storage, Including any Incompatibilities**

Ensure container is kept securely closed before and after use. Keep in a well ventilated area and do not store with strong oxidizers or other incompatible materials (see Section 10).

Storage conditions: 4°C, Hygroscopic

### **7.3 Specific End Uses**

For scientific research and development only. Not for use in humans or animals.

## **8. EXPOSURE CONTROLS/PERSONAL PROTECTION**

### **8.1 Control Parameters**

Contains no components with established occupational exposure limits.

### **8.2 Exposure Controls**

#### **Appropriate Engineering Controls**

A laboratory fumehood or other appropriate form of local exhaust ventilation should be used to avoid exposure.

#### **Personal Protective Equipment**

All recommendations below are advisory in nature and a risk assessment should be performed by the employer/end user prior to use of this product. The type of protective equipment must be selected based on the amount and concentration of the dangerous material being used in the workplace.

#### **Eye/Face Protection**

Safety goggles or face shield. All equipment should have been tested and approved under appropriate standards, such as NIOSH (US), CSA (Canada), or EN 166 (EU).

#### **Skin Protection**

Gloves should be used when handling this material. Gloves are to be inspected prior to use. Contaminated gloves are to be removed using proper glove removal technique so that the outer surface of the glove does not contact bare skin. Dispose of contaminated gloves after use in compliance with good laboratory practices and local requirements.

Gloves used for incidental exposures (splash protection) should be designated as "chemical resistant" by EU standard EN 374 with the resistance codes corresponding to the anticipated use of the material. Unrated gloves are not recommended.

Suggested gloves: AnsellPro Sol-Vex nitrile gloves style 37-175, 15 mil thickness.

Penetration time has not been determined.

Gloves used for prolonged direct exposure (immersion) should be designated "chemical resistant" as per EN 734 with the resistance codes corresponding to the anticipated use of the material.

Suggested gloves: AnsellPro Viton/Butyl gloves style 38-612, 4/8 mil thickness.

Penetration time has not been determined.

These recommendations may not apply if the material is mixed with any other chemical, or dissolved into a solution. A risk assessment must be performed to ensure the gloves will still offer acceptable protection.

#### **Body Protection**

Fire resistant (Nomex) coveralls or chemical-resistant bodysuit (laminated Tychem SL or equivalent).

### Respiratory Protection

Recommended respirators are NIOSH-approved N100 or CEN-approved FFP3 particulate respirators. These are to be only used as a backup to local exhaust ventilation or other engineering controls. If the respirator is the only means of protection, a full-face supplied air respirator must be used.

## 9. PHYSICAL AND CHEMICAL PROPERTIES

### 9.1 Information on Basic Physical and Chemical Properties

#### A) Appearance

Colourless Oil

#### C) Odour Threshold

No data available

#### E) Melting Point/Freezing Point

No Data Available

#### G) Flash point

No data available

#### I) Flammability (Solid/Gas)

No data available

#### K) Vapour Pressure

No data available

#### M) Relative Density

No data available

#### O) Partition Coefficient: n-octanol/water

No data available

#### Q) Decomposition Temperature

No data available

#### S) Explosive Properties

No data available

#### B) Odour

No data available

#### D) pH

No data available

#### F) Initial Boiling Point/Boiling Range

No data available

#### H) Evaporation Rate

No data available

#### J) Upper/Lower Flammability/Explosive Limits

No data available

#### L) Vapour Density

No data available

#### N) Solubility

Chloroform (Sparingly), Ethyl Acetate (Slightly)

#### P) Auto-Ignition Temperature

No data available

#### R) Viscosity

No data available

#### T) Oxidizing Properties

No data available

### 9.2 Other Information

no data available

## 10. STABILITY AND REACTIVITY

### 10.1 Reactivity

No data available

### 10.2 Chemical Stability

Stable under recommended storage conditions.

### 10.3 Possibility of Hazardous Reactions

No data available

### 10.4 Conditions to Avoid

Heat, flames, sparks.

### 10.5 Incompatible Materials

Strong oxidizing agents.

### 10.6 Hazardous Decomposition Products

No data available

## 11. TOXICOLOGICAL INFORMATION

### 11.1 Information on Toxicological Effects

#### A) Acute Toxicity

No data available

#### B) Skin Corrosion/Irritation

No data available

#### C) Serious Eye Damage/Irritation

Corrosive - causes skin and eye burns. May also cause respiratory tract damage.

#### D) Respiratory or Skin Sensitization

No data available

#### E) Germ Cell Mutagenicity

No data available

#### F) Carcinogenicity

No data available

#### **G) Reproductive Toxicity/Teratogenicity**

No data available

#### **H) Single Target Organ Toxicity - Single Exposure**

No data available

#### **I) Single Target Organ Toxicity - Repeated Exposure**

No data available

#### **J) Aspiration Hazard**

No data available

#### **K) Potential Health Effects and Routes of Exposure**

##### **Inhalation**

Toxic if inhaled. Material is extremely destructive to the mucous membranes and respiratory tract.

##### **Ingestion**

Harmful if swallowed.

##### **Skin**

Harmful if absorbed through skin. Causes skin burns.

##### **Eyes**

Causes severe eye burns and possible permanent eye damage.

#### **L) Signs and Symptoms of Exposure**

No data available

To the best of our knowledge, the chemical, physical, and toxicological properties of this material have not been thoroughly investigated.

#### **M) Additional Information**

RTECS: Not listed

## **12. ECOLOGICAL INFORMATION**

### **12.1 Toxicity**

No data available

### **12.2 Persistence and Degradability**

No data available

### **12.3 Bioaccumulative Potential**

No data available

### **12.4 Mobility in Soil**

No data available

### **12.5 Results of PBT and vPvB Assessment**

No data available

### **12.6 Other Adverse Effects**

No data available

## **13. DISPOSAL CONSIDERATIONS**

### **13.1 Waste Treatment Methods**

#### **A) Product**

Product may be burned in an incinerator equipped with afterburner and scrubber. Excess and expired materials are to be offered to a licensed hazardous material disposal company. Ensure that all Federal and Local regulations regarding the disposal and destruction of this material are followed.

#### **B) Contaminated Packaging**

Dispose of as above.

#### **C) Other Considerations**

Product is not to be disposed of in sanitary sewers, storm sewers, or landfills.

## **14. TRANSPORT INFORMATION**

### **14.1 UN Number**

DOT (US): 2810

IATA: 2810

IMDG: 2810

ADR/RID: 2810

### **14.2 UN Proper Shipping Name**

DOT (US)/IATA:

Toxic, liquids, organic, n.o.s. (Benzyl Chloromethyl Ether)

IMDG/ARD/RID:

TOXIC, LIQUIDS, ORGANIC, N.O.S. (BENZYL CHLOROMETHYL ETHER)

**14.3 Transport Hazard Class(es)**

DOT (US): 6.1

IATA: 6.1

IMDG: 6.1

ADR/RID: 6.1

**14.4 Packing Group**

DOT (US): III

IATA: III

IMDG: III

ADR/RID: III

**14.5 Environmental Hazards**

DOT (US): None

IATA: None

IMDG: None

ADR/RID: None

**14.6 Special Precautions for User**

None

**15. REGULATORY INFORMATION**

This safety data sheet complies with the requirements of WHMIS (Canada), OSHA 1910.1200 (US), and EU Regulation EC No. 1907/2006 (European Union).

**15.1 Safety, Health and Environmental Regulations/Legislation Specific for the Substance or Mixture****A) Canada**

**DSL/NDSL Status:** This product is not listed on the Canadian DSL/NDSL.

**B) United States**

**TSCA Status:** This product is not listed on the US EPA TSCA.

**C) European Union**

**ECHA Status:** This product is not registered with the EU ECHA.

**15.2 Chemical Safety Assessment**

No data available

**16. OTHER INFORMATION****16.1 Revision History**

Original Publication Date: 12/10/2014

**16.2 List of Abbreviations**

LD50	Median lethal dose of a substance required to kill 50% of a test population.
LC50	Medial lethal concentration of a substance required to kill 50% of a test population.
LDLo	Lowest known lethal dose
TDLo	Lowest known toxic dose
IARC	International Agency for Research on Cancer
NTP	National Toxicology Program
RTECS	Registry of Toxic Effects of Chemical Substances

**16.3 Further Information**

Copyright 2015. Toronto Research Chemicals Inc. Copies may be made for internal use only. The above information is believed to be correct to the best of our knowledge, but is to be only used as a guide. To the best of our knowledge, the chemical, physical, and toxicological properties have not been thoroughly investigated. Please take all due care when handling this product.